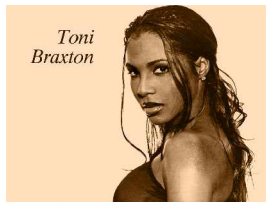


Un-break My Heart lyrics *By Toni Braxton*

Don't leave me in all this pain/place
Don't leave me out in the rain/train
Come back and bring back my smile/style
Come and take these tears/fears away
I need your arms to hold me now
The nights are so unkind
Bring back those nights/tights
when I held you beside me



1-Un-break my heart
Say you'll _____
Un-do this hurt _____
When you walked _____
And walked outta my life/light
Un-cry these tears/fears
I cried/tried so many nights/lights
Un-break my heart, my heart

Take back that sad word _____
Bring back the joy to my life/lies
Don't leave me here with these tears/fears
Come and kiss/kick this pain away
I can't forget the day you left
Time/tide is so unkind
And life is so cruel without you here beside me
(repeat 1)

Oh, oh
Don't leave me in all this pain/pace
Don't leave me out in the rain/race
Bring back the nights when I held you beside me
(Rpt 1)

Un-break my
Un-break my heart, oh baby/may be
Come back and say you love me
Un-break my heart
Sweet darlin'
Without you I just can't go on
Can't go on

Discussion:

1. What events can make lovers unhappy?
2. How do you resolve misunderstandings in relationships?
3. How can time be unkind?
4. In what ways can people undo hurts caused in love relationships?
5. What events lead to mistrust in love relationships?

Listening

1. Listen to the song and fill in the missing words.
2. Choose the correct words from the words in bold.

Vocabulary building skills

Prefixes: *these are words added in front of roots words to modify or change their meanings*
example :(pref.) **Un-** + (root wd) **Happy** = **unhappy** meaning – **not happy**

- What root words in the song, have the prefix **un-** in front of them? What does **un-** mean?

Find **un-** words in your dictionary that have a connection with **not**?

Example:

Unhappy, uncommon,

- What other negating prefixes do you know and what do they mean?

- Do you know about **mis-** prefixes?
As in **mis-** + **understanding** = **misunderstanding**.

How many **mis-** + **root words** can you find in your dictionary? How many words have a connection with the meaning **wrong, bad, not correct**?

For example misunderstand does not mean “**not understand**” but it means “**understand wrongly or not correctly**”

Prefix tasks

1. Look up words beginning with oct-, or octo-. What connection do they have with the number eight?
Did you find Octopus?
How many hands does an octopus have?
N:B Octo is the Latin for eight.
2. Sub- means under, or below. Look up words beginning with sub-. How many words have a connection with the meaning above?

Example:

What is a **subway, submarine**?

Look up words with the following prefixes and find out if there are any relations in meaning?

Tele-, Under-, micro-, uni-, re-, over-

Full songs lyric for teachers

Unbreak My Heart Lyrics

By Toni Braxton

Don't leave me in all this pain
Don't leave me out in the rain
Come back and bring back my smile
Come and take these tears away
I need your arms to hold me now
The nights are so unkind
Bring back those nights when I held you beside me

1-Un-break my heart
Say you'll love me again
Un-do this hurt you caused
When you walked out the door
And walked outta my life
Un-cry these tears
I cried so many nights
Un-break my heart, my heart

Take back that sad word good-bye
Bring back the joy to my life
Don't leave me here with these tears
Come and kiss this pain away
I can't forget the day you left
Time is so unkind
And life is so cruel without you here beside me
(repeat 1)

Ohh, oh
Don't leave me in all this pain
Don't leave me out in the rain
Bring back the nights when I held you beside me
(rpt 1)

Un-break my
Un-break my heart, oh baby
Come back and say you love me
Un-break my heart
Sweet darlin'
Without you I just can't go on
Can't go on